



## Anticipated Outcomes

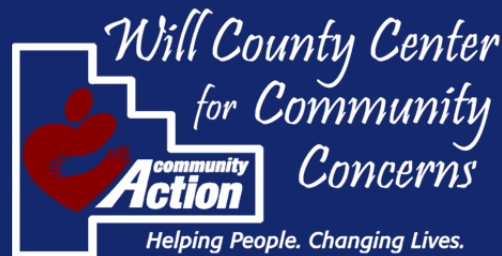
1. Will County will have a center point for all homeless issues, research and education.
2. Duplication of services will be reduced among providers.
3. Intensive research will enable our community to quantify and understand its homeless needs.
4. The public, private and non-profit sectors will be linked in partnership.
5. Funding requests will be the result of community-wide consensus.
6. The Continuum will employ a results-oriented, measurable approach to all services and programs.
7. The Continuum will continually gauge its success in helping Will County's homeless achieve self-sufficiency.

**WE NEED YOU!**



A successful continuum of care requires the community's involvement to positively impact programs and service delivery at every critical phase of the homeless cycle. For more information, contact the lead agency:

homelessnessless...



304 N. Scott Street  
 Joliet, IL 60432  
 815.722.0722 ph  
 815.722.6344 fax  
[www.wcccc.net](http://www.wcccc.net)

*Working in partnership to build a comprehensive service delivery system that leads individuals and families from homelessness to self-sufficiency.*

# Vision

THE WILL COUNTY CONTINUUM OF CARE IS DEDICATED TO STREAMLINING AND STRENGTHENING THE CURRENT SERVICE DELIVERY SYSTEM THROUGH EVEN GREATER COLLABORATIVE PLANNING, PARTNERSHIP AND PROGRAM EXECUTION. IT IS THE VISION OF THE CONTINUUM OF CARE MEMBERS TO CREATE A SEAMLESS, COMPREHENSIVE SYSTEM OF SERVICES THAT:

1. PREVENTS AND ENDS HOMELESSNESS
2. SUPPORTS THE EMERGENCY AS WELL AS ONGOING SUPPORTIVE NEEDS OF THE HOMELESS
3. PROVIDES THE TOOLS NECESSARY TO SUSTAIN INDEPENDENT LIVING
4. LEADS TO PERMANENT SELF-SUFFICIENCY

## Strategy

The Will County area has long supported its homeless and at-risk population through a strong and committed service provider network. Our community continues to witness an increase in demand for services, and with the ongoing struggles of our economic climate, the needs among local individuals and families will likely increase further.

In 2008, the Continuum established the Homeless Services Program in order to fill gaps in services provided to the homeless. Case managers from organizations that provide supportive services to the homeless population and participate in the Continuum of Care are able to refer individuals or families for services that they have not been successfully linked with or are otherwise unavailable.

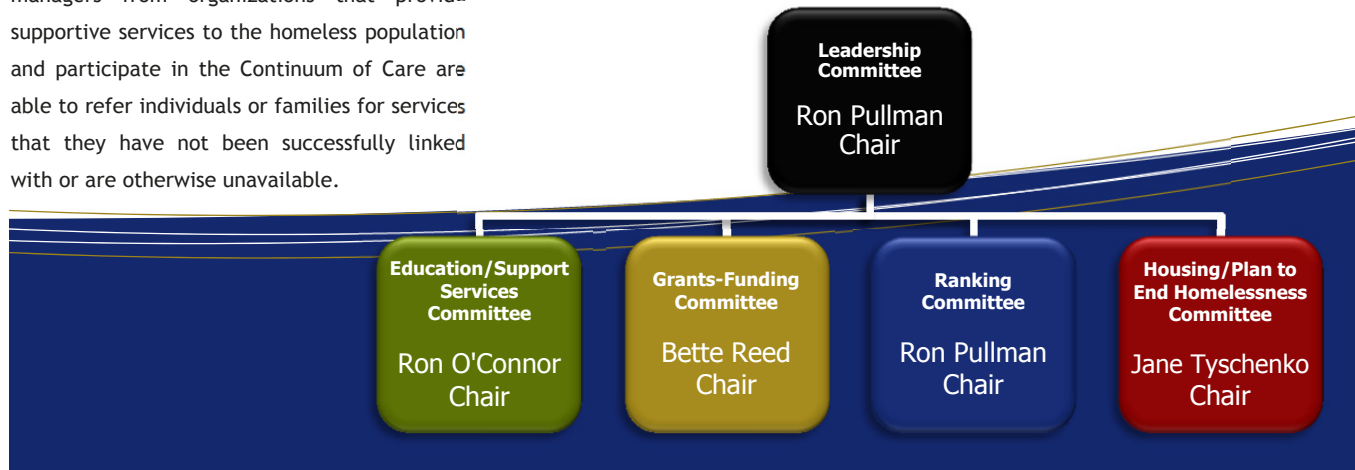
### WHO SHOULD PARTICIPATE?

Government entities, elected officials, non-profit organizations, financial institutions, businesses, housing developers, churches, health care providers, neighborhood associations, educators, the media, homeless as well as formerly homeless persons and others.

### WHAT WILL WE ACHIEVE IN PARTNERSHIP?

Identification of gaps, expansion of existing or development of new services, collaboration for funding opportunities, reduction in duplication and the streamlining of service delivery, while measuring the effectiveness of all services and activities on an ongoing basis within the following structure:

Five “homeless support” committees to closely focus on the primary issues impacting Will County’s homeless; address these issues in relationship to homeless prevention, crisis intervention, stabilization, housing/self-sufficiency and follow-up.



## LEADERSHIP COMMITTEE

### Chair

Ronald Pullman - Will County Community Development Department

### Vice-Chair

Alfredo Melesio - City of Joliet Neighborhood Services

### Secretary

Cynthia Ketcham - Veterans Assistance Commission of Will County

### Homeless Services Coordinator

Todd Fuller - Will County Center for Community Concerns

Agape Missions, NFP - Jill Skole

Aunt Martha's Youth Service Center - Jennifer White Goehrig

Catholic Charities-Daybreak Center - Yvonne McDonald-Hames

Catholic Charities, Diocese of Joliet - Jane Tyschenko

Cornerstone Services, Inc. - Bette Reed

Cornerstone Services, Inc. - Nicole Miralgio

Crisis Line of Will County - Michele Batara

Emerging Life Solutions - Chrystal Hansen

Guardian Angel Community Services - Ines Kutlesa

Illinois Dept. of Employment Security - Eva Kukulka

Lamb's Fold Center for Women and Children - Rhonda Sykes

MorningStar Mission Ministries, Inc. - Marilyn Farmer

Stepping Stones Recovery Center - Pete McLenighan

Trinity Services, Inc. - Michelle Brubaker

United Way of Will County - Michael Hennessy

Village of Bolingbrook - Matthew Eastman

Will County Center for Community Concerns - Kris White

Will County Habitat for Humanity - Annette Leck

Will County Health Department - John J. Cicero

